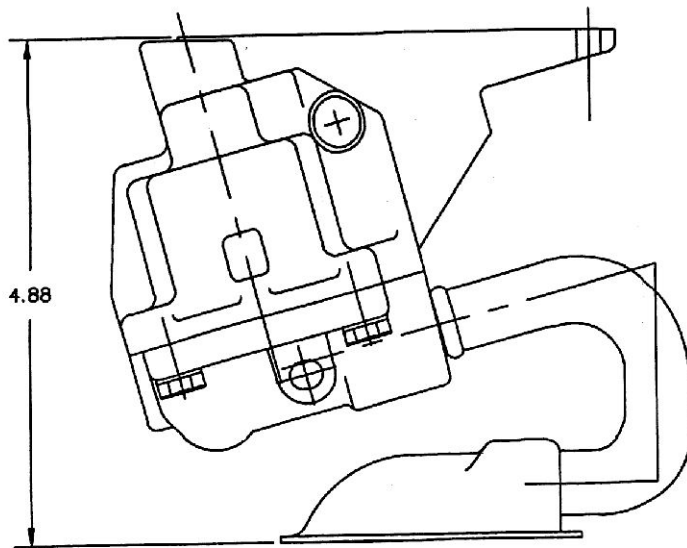


M98018

2.0L GM OIL PUMP & SCREEN INSTALLATION INSTRUCTIONS



NOTE 1
DUE TO THE CLOSENESS OF
THE SCREEN TO THE BOTTOM
OF THE PAN, THESE
INSTRUCTIONS MUST BE
FOLLOWED.

OVER

M98018

WARNING
(IMPORTANT NOTICE)

It is important that you check the **clearances** between the oil pump, crankshaft, connecting rods, and oil pan.

Also, make sure that the oil pick-up screen is not making contact with the oil pan.

Failure to insure proper clearances **voids** any warranty of this product.

OVER